

# BRUCHA<sup>®</sup>Paneel

## PIR+ Wall – WP

Visible mounting

### Standard DESIGN AND SURFACES

Coil-coated, hot-dip galvanised steel sheet for cold storage and food handling areas – test seal for clean room suitability



EXTERIOR:	<ul style="list-style-type: none"><li>Exposed side 25 µm polyester coating with a PVC protective film (protects against solar radiation). The film must be removed no later than 10 weeks after the production date (visible on the longitudinal joint of the panel).</li><li>Profile 1 = Standard, for other profiles see WP PROFILE options</li><li>Metal gauge: 0.6 mm (smaller metal gauge on request)</li></ul>
INTERIOR:	<ul style="list-style-type: none"><li>Exposed side 25 µm polyester coating with a PVC protective film (protects against solar radiation). The film must be removed no later than 10 weeks after the production date (visible on the longitudinal joint of the panel).</li><li>Profile 1 = standard (profile 2 and 3 on request)</li><li>Metal gauge: 0.5 mm (smaller metal gauge on request)</li></ul>
INSULATION CORE:	<ul style="list-style-type: none"><li>PIR+/polyurethane rigid foam manufactured in continuously foamed process with reduced thermal conductivity of 0.019 W/mK, approx. 95 % closed cells, securely attached to the steel sheet</li><li>Density approx. 40 kg/m<sup>3</sup>, absolutely no chlorofluorocarbons or halogenated chlorofluorocarbons – pentane foam process</li></ul>
FIRE BEHAVIOUR:	<ul style="list-style-type: none"><li>In line with EN 13501-1, Euroclass Bs1d0</li></ul>
STANDARD COLOURS:	<ul style="list-style-type: none"><li>In accordance with BASIC colour range</li></ul>
PANEL CONNECTION:	<ul style="list-style-type: none"><li>“Tongue and groove system” and from 100 mm thickness with labyrinth system. The exterior and interior sheet steel covers are not connected to each other. The integrated seal ensures optimum wind proofing. The panels interlink precisely with no thermal bridge.</li></ul>
SPECIFICATIONS:	Download from <a href="http://www.brucha.com">www.brucha.com</a>
EXTERNAL MONITORING:	National and international tests, quality standards



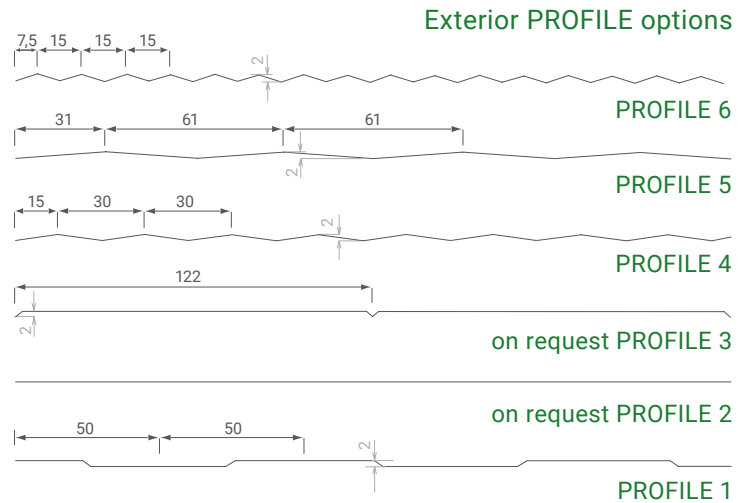
We will be happy to send certificates on request!



# BRUCHAPaneel®

## PIR+ Wall – WP

Visible mounting



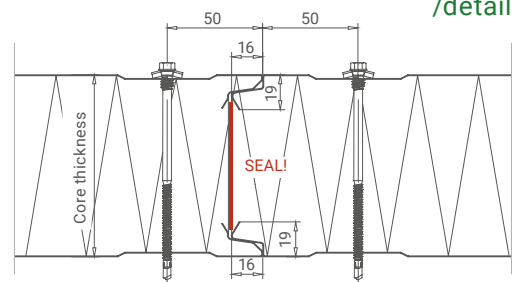
BRUCHAPaneel panel WP with polyurethane core can be combined with BRUCHAPaneel WP-F with mineral wool core using an adaptor panel.

Panel type	WP40	WP50	WP60	WP80	WP100	WP120	WP140	WP150*	WP160	WP170	WP180*	WP200	WP220*	WP250*
Core thickness mm	40	50	60	80	100	120	140	150	160	170	180	200	220	250
U-value W/m <sup>2</sup> K - EN 14509 including joint section	0.530	0.417	0.330	0.251	0.199	0.166	0.142	0.133	0.124	0.112	0.111	0.099	0.090	0.082
Weight kg/m <sup>2</sup>	10.9	11.3	11.7	12.5	13.3	14.1	14.9	15.3	15.7	16.1	16.5	17.3	18.1	19.3

\*on request, from 500 m<sup>2</sup> (180 from 300 m<sup>2</sup>), max. production length 16 m

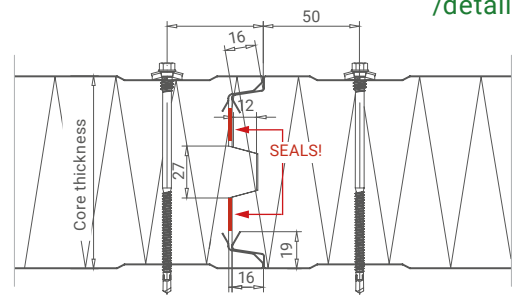
<b>Manufacturing tolerances:</b>	In line with EN 14509
<b>Manufacturing lengths:</b>	Max. 18.4 m (extra-long transport from 13.6 m)
<b>Span width tables:</b>	From Dr Wilhelm Pilgram – Vienna
<b>Sound insulation:</b>	26 dB at 60/80 mm, 27 dB from 100 mm core thickness
<b>Temperature resistance:</b>	90°C

### Joint geometry up to 80 mm core thickness /detail



Butt joint:  
2 mm ± 2 mm tolerance

### Joint geometry from 100 mm core thickness /detail



Butt joint:  
2 mm ± 2 mm tolerance

